

The EUMETSAT  
Network of  
Satellite Application  
Facilities



**NWC SAF**

Support to Nowcasting and  
Very Short Range Forecasting

**SMHI**

# **SAFNWC/PPS package:**

## **An overview**

**SAFNWC User Workshop**

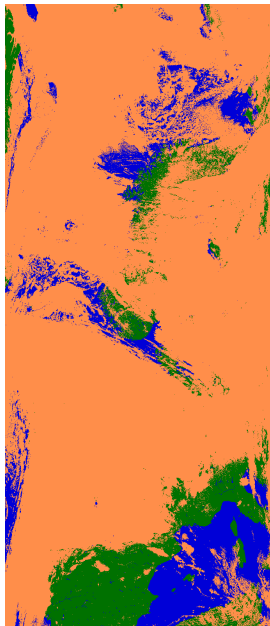
**Madrid 2015-02-24**

**Sara Hörnquist, SMHI**

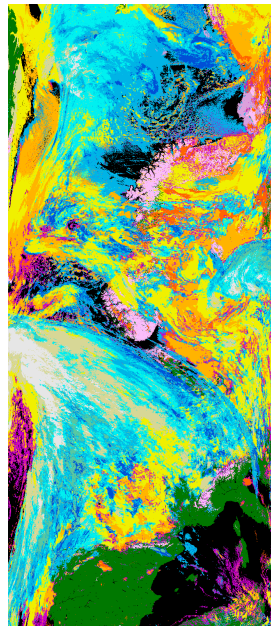
# PPS Products

-----Cloud Products-----

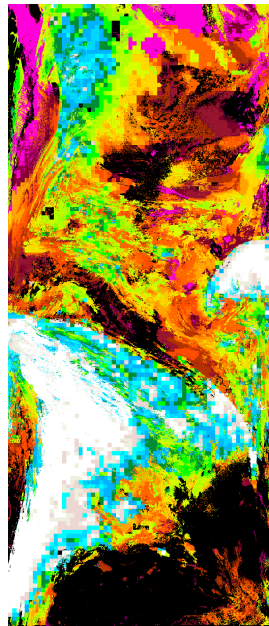
Precipitation  
Products



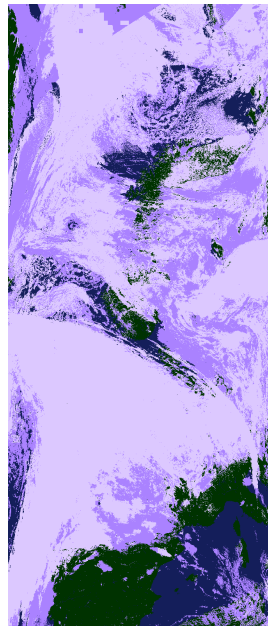
Cloud Mask



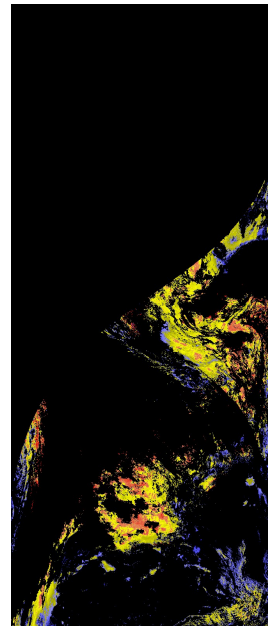
Cloud Type



Cloud Top  
Height

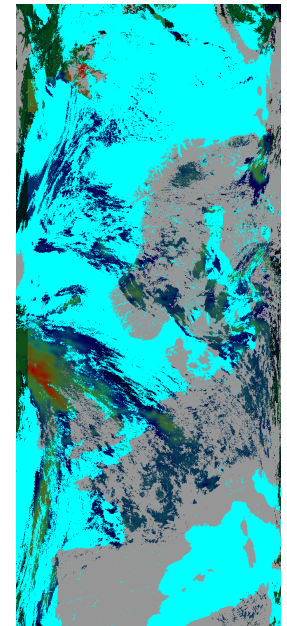


Cloud Phase



Liquid Water  
Path

-----Cloud Physical Properties-----

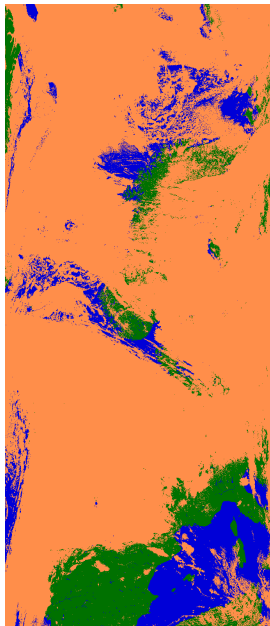


Precipitating  
Clouds

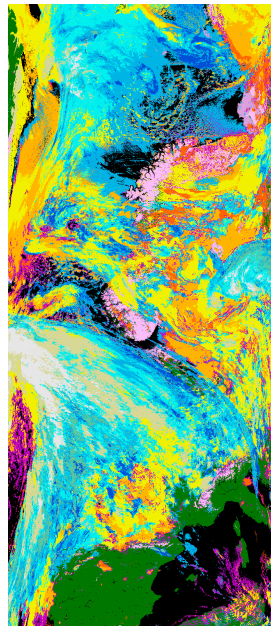
# PPS All Products

## -----Cloud Products-----

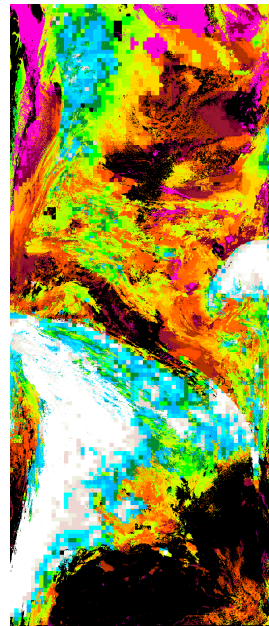
## Precipitation Products



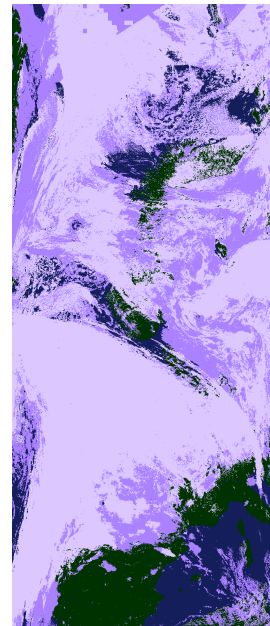
Cloud Mask  
binary and  
extended



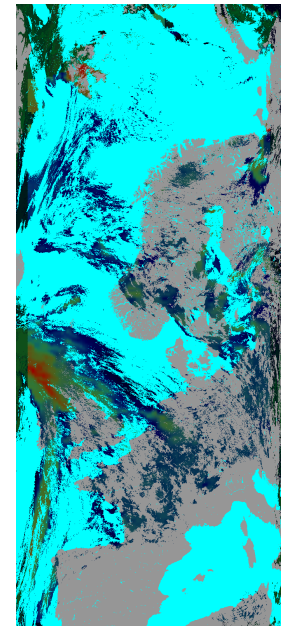
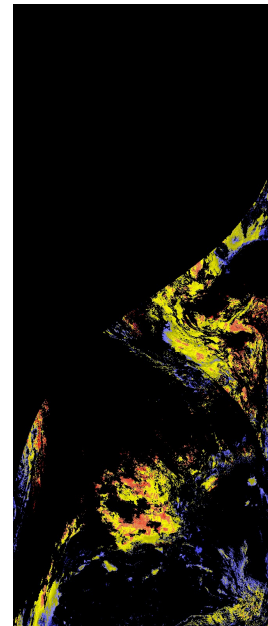
Cloud Type



Cloud Top  
Height  
Temperature  
Pressure



Cloud Physical Properties:  
Cloud Phase  
Liquid/Ice/Cloud Water Path  
Cloud Optical Thickness  
Effective Radius



Likelihood for  
intense  
moderate  
light  
precipitation

# How to get PPS products

- Run the software your self
  - in real time
  - *or* using historical data
- Receive data from EARS-NWC
  - Near real time
  - Cloud Mask, Cloud Type, CTTH
  - Metop and NOAA satellites, S-NPP TBD

# Satellites and Sensors

## Cloud Products

- NOAA (AVHRR)
- Metop (AVHRR)
- EOS (MODIS)
- Suomi-NPP (VIIRS)

## Precipitation Product

- NOAA (AVHRR + AMSU-B/  
MHS)
- Metop (AVHRR + MHS)

# Satellites and Sensors Planned

- JPSS (VIIRS)
  - First launch 2017.
- FY-3D,E,F (MERSI-2)
  - Launch dates:2015-2019, FY-3E in early morning orbit!
- EPS-SG (VII, MWI/ICI)

# Alternative data formats

- Direct read-out
- Global Metop (via EUMETCast)
- Archive formats including AVHRR GAC

# Usage

- Nowcasting!
- Climate SAF
  - making climatologies from Cloud Mask and CTTH
  - Cloud Mask for masking (both masking clouds, and masking clear)
- Other SAF:s (OSISAF, LandSAF)
  - Using the Cloud Mask



# Versions

- PPS v2014 out since October 2014
- PPS v2014 major patch, planned in March 2015
  - Globally improved Cloud Mask (CMSAF feedback)
  - Smaller technical improvements and bug fixes
- Next ordinary version: PPS v2017, planned in spring/summer 2017

# Major technical changes

- PPS v2014:
  - Binary installation (as an alternative to conventional)
  - New output format
  - Products in both hdf5 and netcdf
- PPS v2014 patch:
  - If running part of scene, product name get adapted times
- PPS v2017:
  - Products and intermediate files in netcdf only

Thank you!